

Stoner Ridge Farm News

Charlie DeAtley, Home: 323 Youngs Mill Rd., Paris, KY 40361
charlied8282@gmail.com ~ 859.749.8982 ~ stoneridgefarm.com

Foundation First Mountain Horse Training™

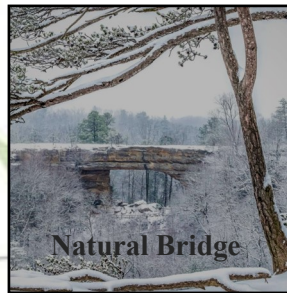


Life Lately



I am always glad to put February behind me. It is a month filled with

erratic weather - snow then rain, then mud, then ice, and every once in awhile, there will be a sunny day thrown in just to tease us into believing that spring is just around the corner. We have had our fair share of cold. We got down in the single digits during February, and we had a little snow. I'll admit, it is beautiful when everything is covered in white. Even so, there has been a lot going on. Ruby has been busy as always. She had her FFA Chapter Degree Promotion Ceremony recently.



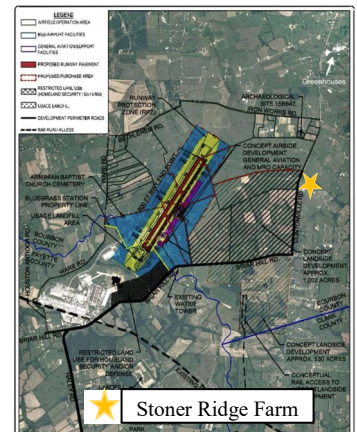
Fortunately, Charlie was able to attend as well. Ruby also received her ribbons from the Virtual Trail Obstacle Compe-



tition that she and Pepper did in October. Julie Tucker and Charlie received recognition for their participation at the year-end virtual ceremony as "Champions".

You all have probably seen the controversy about Bluegrass Station and the proposed runway on Facebook. To add a little clarity, we were made aware of a possible airstrip that would involve taking 2,000 to 4,000 acres of land by eminent domain just across the road from SRF. The 7,800 ft. runway would have been longer than the one at Bluegrass Field in Lexington. The community rallied with their first meeting of 400-500 local land owners. There was TV coverage and many calls and emails to legislators. The governor has stated he will not support moving forward with the project without community support.

Even though the Bourbon County Judge Exec. was in favor of the airstrip, the magistrates have recently voted it down. Even Director Collins, from BGS has stated the project is closed. Hopefully, it is NOT going forward. The only problem we see is that \$55 million is in the KY proposed budget. We hope Kentucky Legislators will not approve that line-item. We are praying and keeping our fingers crossed. I just can't imagine an airport (and all the pollution and noise) that close!



We are excited that March is here! Steve Heuslein has been here to see his horses, enjoy the banquet and participate in the Strategic Planning sessions held by the RMHA this weekend. It is great that so many are able to come to the banquet. Ruby has her State Indoor Track competition in Louisville on Saturday, and it is unlikely that she will be able to join us this year for the banquet. Thanks to everyone who sent pictures in for



Life Lately Con't from p. 1

the slide show. The Membership Meeting will be at 6:00 p.m. with the drawing for the steward/trail obstacle judge and the three RMHA licensed ring judges at 6:10. The meal will follow the meeting and then the awards will be presented.

Menu

Roasted Chicken
Garden/Caesar Salad
Mashed Potatoes
Broccoli Casserole
Macaroni and Cheese
Cheese Cake/Cobbler

We're looking forward to it! Spring is also the time we bring show horses back into the barn for training. Last month Simon, Jim, and Reo returned to training. This month we will see WOF, Broker, and Chicago. Brenda and Larry Watson have brought their gelding B & T's Slamma Jamma for training. It won't be long before Ruby and Olivia are back to do some riding. Charlie hopes to continue going to two shows per month. The horses really performed well at the International this past year. He also has another clinic scheduled in Shelby, NC. He was a great help to many people there.



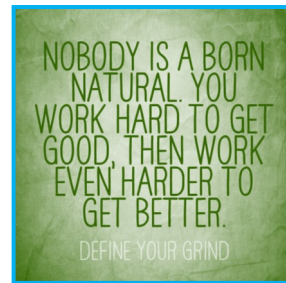
Important Dates

- March 1** RMHA B - Lions Club Charity Horse Show, Marshall, TX
March 2 RMHA B - Lions Club Charity Horse Show, Marshall, TX
March 2 RMHA Membership meeting 6:00 p.m. with the RMHA Awards Banquet to follow at 7:00 p.m. Double-Tree, Lexington, KY
May 4 RMHA A - Lee County Saddle Club, Beattyville
May 18 Whitney McArthur Show B, West Liberty, KY
May 23 - 25 Charlie to do Suncrest Clinic, Shelby, NC
May 31 & June 1 RMHA B Carter County Shrine Show, Olive Hill, KY
June 7 Ruby's 16th Birthday
June 15 RMHA A - Get Your Pink on Show, Owingsville
June 23 Clark County Fair Fun Show
July 13 RMHA B - Harrison County Fair Show, Cynthiana
Sept. 4 - 7 RMHA International Grand Championship Horse Show, Kentucky Horse Park, Lexington, KY

Prayers Please

Please whisper a prayer for comfort for the family of Pauline Stacy, Bob's Aunt, who has gone home to be with the Lord. She was 104. Just imagine all the changes she witnessed in her lifetime. Aunt Pauline was mother to 12 children, 137 grand children and many great and great, great grand children. We are thankful for her Christian witness and the gusto with which she embraced life.

We are thankful for the Lord's many blessings and continue to pray for His guidance daily.



Southern Equine Expo



Congratulations to Wendy Montgomery and Rocky for their performances at the Southern Equine Expo. They won the Amateur and the Open Versatility Challenge. They did so very well!

SUNCREST EVENT CENTER PRESENTS
CHARLIE DEATLEY
GAITED CLINIC
5 Time RMHA Trainer Of The Year
Price: \$500 with \$100 Deposit.
Auditors Welcome: \$25
May 24th & 25th, 2024
1931 Barbee Rd
Shelby, NC
Private Lessons on Thursday, May 23rd.
Limited Spots Available. \$100
Photography by Moody H Photography
Poster Maker